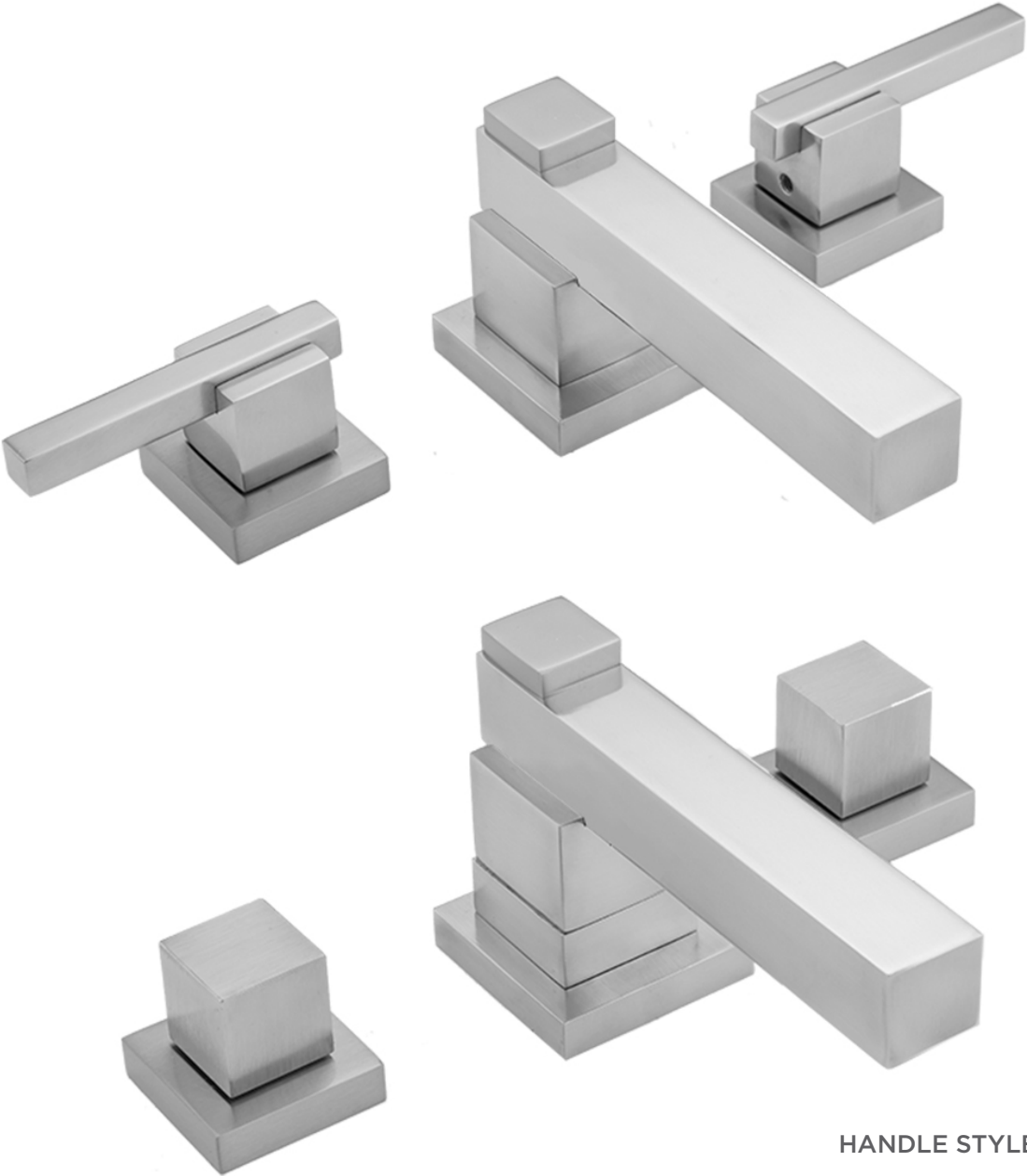
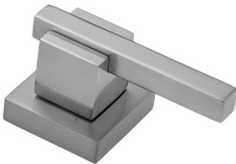


INSTALLATION INSTRUCTIONS

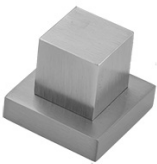
Cubix® Widespread Faucet  
Part #: 3204, 5204, 3304, 5304



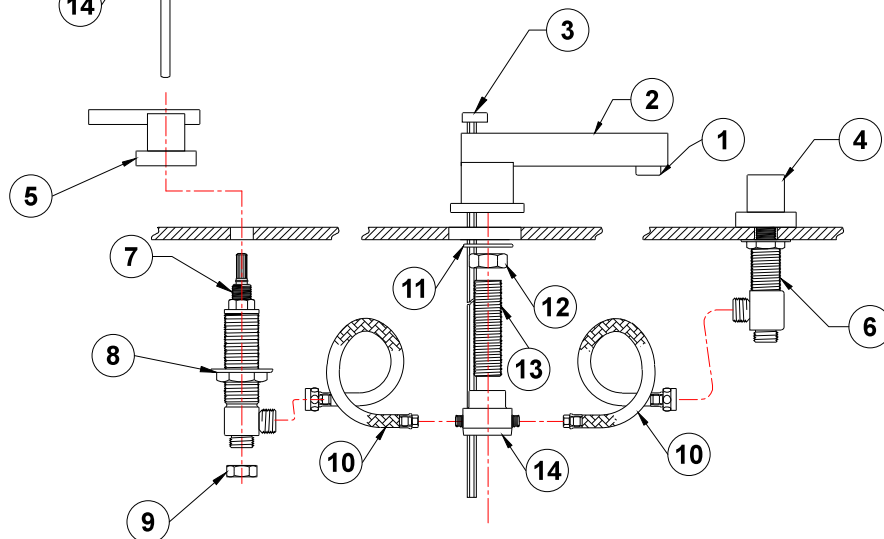
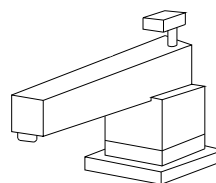
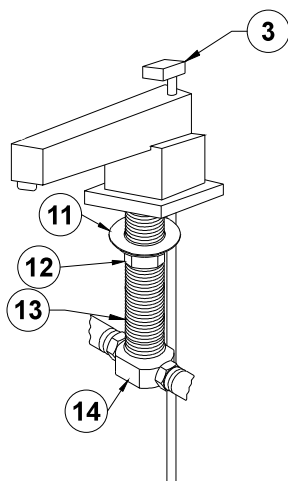
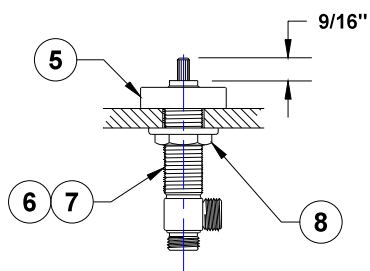
HANDLE STYLES



3204



5204



# COMPONENT PARTS

1	Aerator - CU-400-AER
2	3204 Spout - CU-400-SPOUT-LL-***
3	Pop Up Rod Assembly - CU-400-R-*** / CU-400-K-***
4	Handle - VARIES ON MODEL
5	Valve Escutcheon - CU-400-ESC-***
6	Valve Body Cold - 11833-0
7	Valve Body Hot - 11832-0
8	Valve Body Nut (2)
9	Rubber Cone Washer - A438-0
10	Hose (2) - 5130-RGH
11	Washer - CU-400-WASHER-0
12	Brass Nut - CU-400-NUT-0
13	Brass Nipple - 0-CU-400-LL-NIPPLE
14	Brass Tee - CU-400-TEE-0

## Spout Installation

**Note: Some items have been pre-assembled at the factory to ensure quality and fit. Some disassembly may be required during installation.**

1. Remove nut (13), washer (12) and "T" if installed from spout mounting nipple (14).
2. Slide spout assembly through counter top or basin.
3. Slide washer (12) onto spout nipple. Install nut (13) onto spout nipple and secure spout onto counter top or basin once positioned correctly.
4. Install "T" (15) onto nipple (14) using a NSF listed joint compound.

FIGURE 1

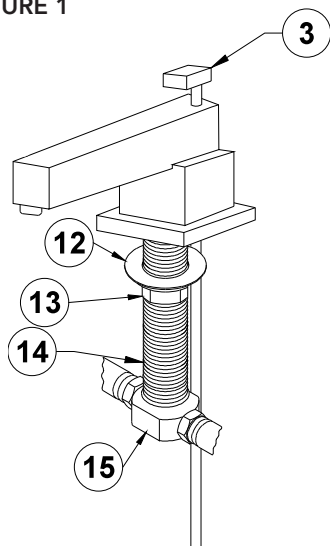
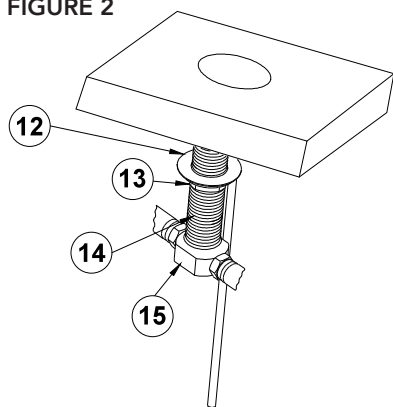


FIGURE 2



## Valve Installation

1. Identify hot and cold valves. Hot has red ring and cold has blue ring.
2. Install hot valve on left side of spout when facing sink. **Figure 3.**
3. Install cold valve on right side of spout when facing sink. **Figure 3.**
4. Remove handle, escutcheon, and top valve nut.
5. Adjust lower valve nut (9) down away from valve stem. **Figure 4.**
6. Place fiber washer (8) on top of nut.
7. Find handle/escutcheon "A" dimension. **Figure 5.**
8. Thread nut up towards stem so distance from top of fiber washer to top of valve stem = "A" dimension + counter or basin thickness.
9. Install valve through bottom of counter or basin. **Figure 4.**
10. Install top nut and escutcheon on to valve and tighten. Note: not all handle/escutcheon combinations use a top nut. **Figure 5.**
11. Confirm "A" dimension for faucet model installed. Adjust if necessary.

## Hose Installation

1. Connect hot hose to hot valve outlet and "T". **Figure 3.**
2. Connect cold hose to cold valve outlet and "T". **Figure 3.**
3. Connect supply hoses or tubes (not supplied) to base of hot and cold valves. **Figure 4.**

## Aerator Cleaning ALWAYS REMOVE AERATOR AND FLUSH THE FAUCET AFTER INITIAL INSTALLATION

1. Use aerator key supplied with faucet
2. Engage key in aerator. **Figure 1.**
3. Remove aerator by turning key counterclockwise
4. Turn on hot and cold water valves flush lines
5. Reinstall aerator by engaging key and turning clockwise until tight
6. Check for leaks, re-tighten if necessary



FIGURE 1

FIGURE 3

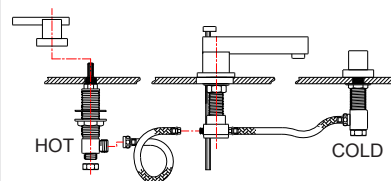


FIGURE 4

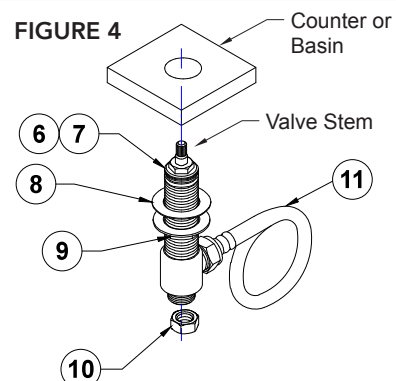
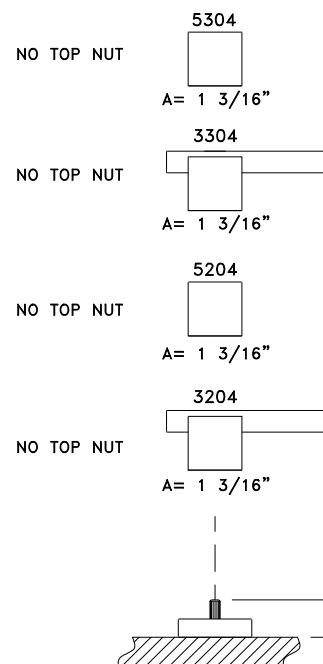


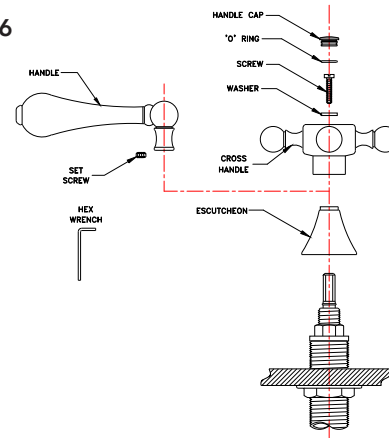
FIGURE 5



## Handle Installation

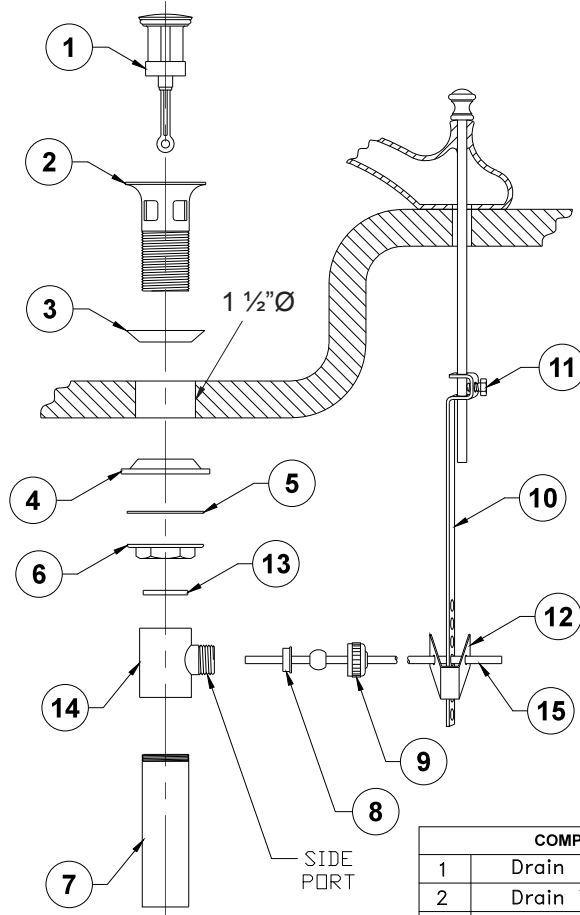
1. Install handle onto stem in desired "off" position.
2. Confirm handle is not binding with escutcheon. Adjust valve nuts and escutcheon if necessary.
3. Handles are fastened with a set screw or top screw. **Figure 6.**
4. If set screw type, install washer and screw, tighten then press in decorative cap with o-ring.
5. If top screw type, install washer and screw, tighten then press in decorative cap with o-ring.

FIGURE 6



## Drain Assembly

1. Slip the top gasket (3) over the drain tube (2).
2. Place drain tube through hole in basin.
3. Install bottom gasket (4), mounting washer (5) and mounting nut (6) onto drain tube. Tighten using basin wrench.
4. Place tube washer (13) into drain body (14) and tighten into drain tube, positioning side port toward the back of basin.
5. Wrap the threads of the tail tube (7) with two layers of teflon tape and thread into drain body.
6. Insert drain plug (1) into drain tube.
7. **Note: Drain plug style may vary** Insert ball rod seat (8) into side port of drain body, carefully insert ball rod (15) through the hole provided in drain plug.
8. Thread ball rod nut (9) onto drain body and tighten until snug. **DO NOT OVER TIGHTEN**
9. With the lift rod in position on the spout, insert the end into the lift rod strap (10) as shown.
10. Slide the other end of the lift rod strap onto ball rod, using the spring clip (12) as shown.
11. Push the ball rod down to put drain plug in full open position and adjust the lift rod height so that the knob rests on top of the spout.
12. Tighten lift rod strap screw (11) using the adjustable wrench.



COMPONENT PARTS

COMPONENT PARTS	
1	Drain Plug
2	Drain Tube
3	Top Gasket
4	Bottom Gasket
5	Mounting Washer
6	Mounting Nut
7	Tail Tube
8	Ball Rod Seat
9	Ball Rod Nut
10	Lift Rod Strap
11	Lift Rod Strap Screw
12	Spring Clip
13	Tube Washer
14	Drain Body
15	Ball Rod

To learn more about JACLO's warranty, please visit **[jaclo.com](http://jaclo.com)**