

INSTALLATION INSTRUCTIONS

Deluxe Brass & Commercial Grab Bars

Part #'s: 25**,26**,27**,29**
112**,114**

JACLO®

Confidence from start to finish.™

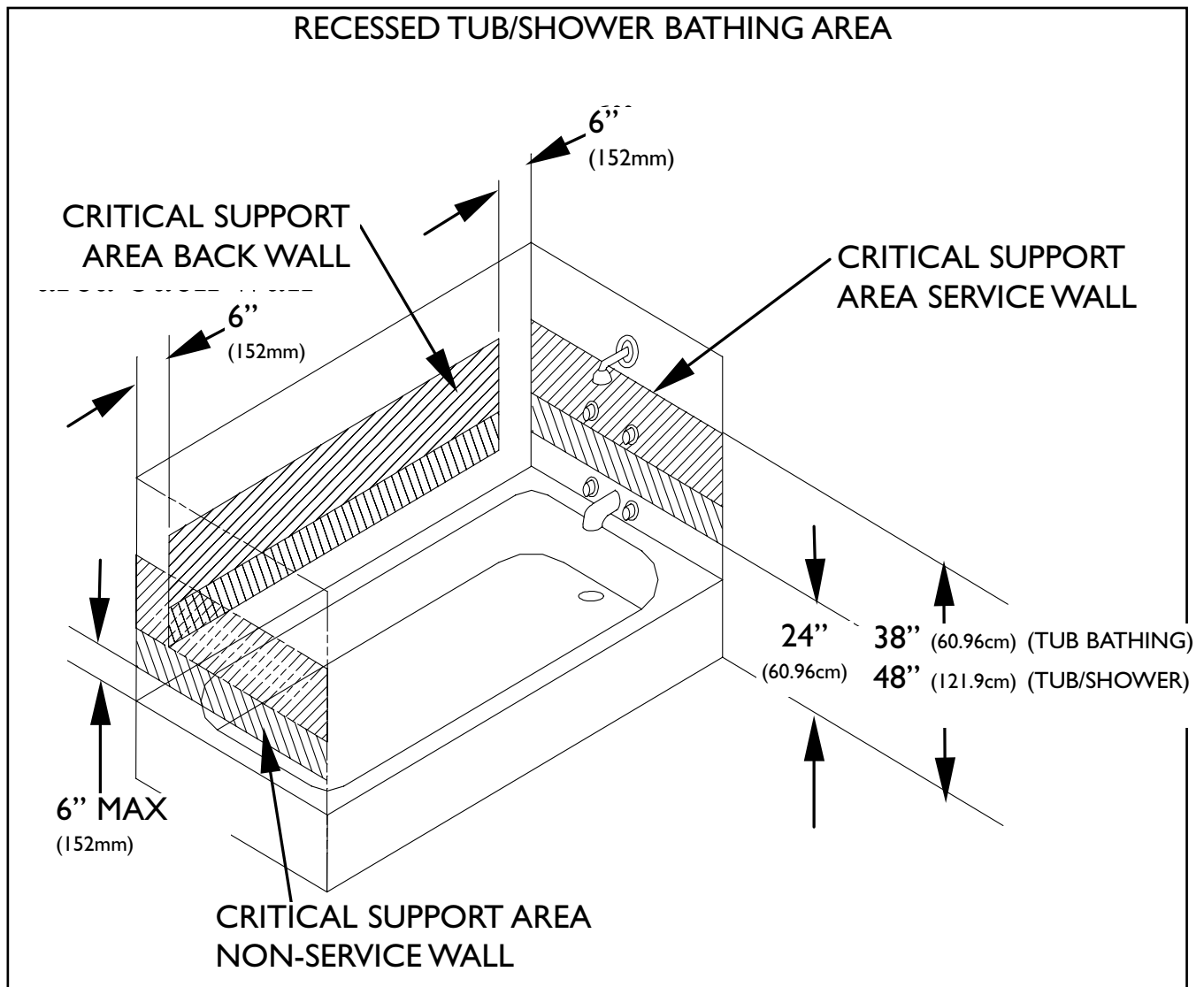


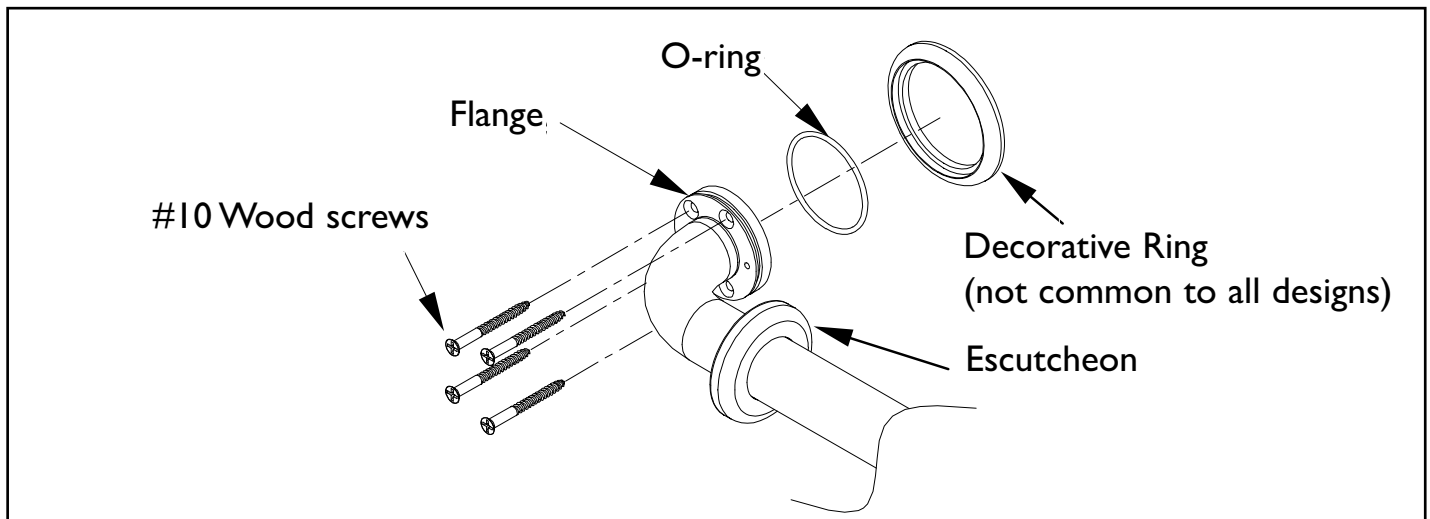
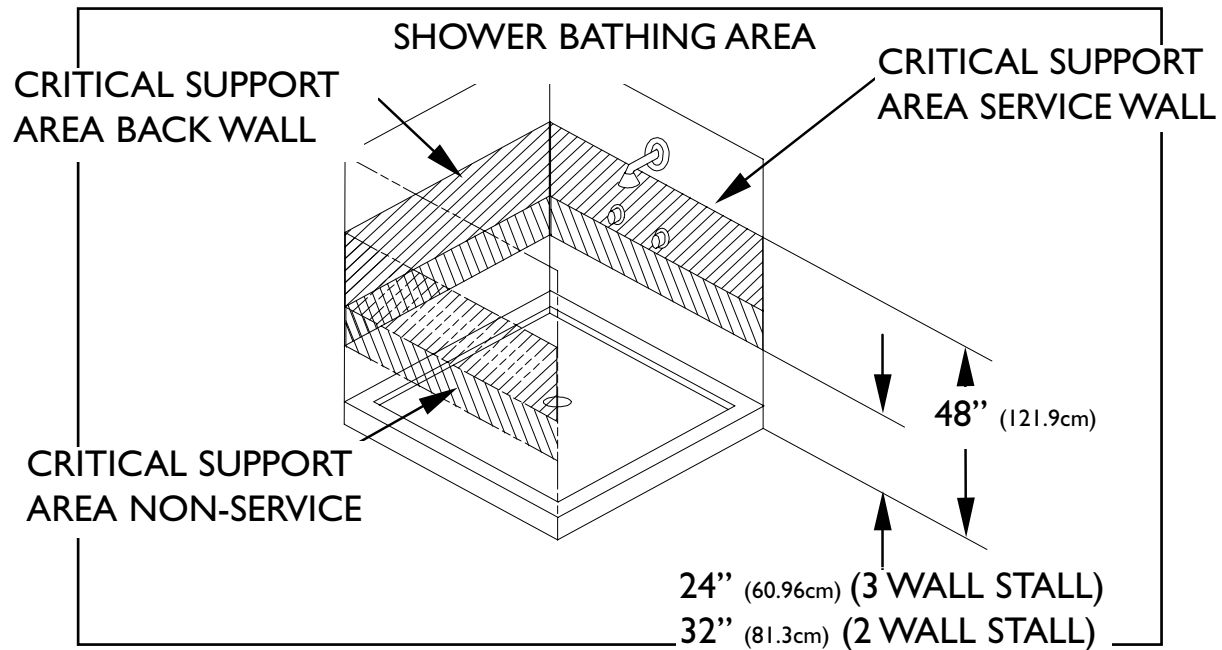
We recommend Installation of this product by a Professional Contractor

Grab bars are to be installed in the critical support area as follows:

TUB - A horizontal grab bar(s) shall be installed on the back wall critical support area with a total minimum length equal to 30% of the horizontal length of the critical support area. A horizontal or vertical grab bar(s) shall be installed in the critical support area on either the service or non-service wall. A minimum horizontal graspable length of 9" (229mm). A minimum vertical graspable length of 6" (152mm) and shall be installed in the tub entrance area. See detail below.

SHOWER - A horizontal grab bar(s) shall be installed in the critical support area on either the service, back or non-service wall. A minimum graspable length of 9" (229mm).





Installation Notes:

The #10 screws provided are for installation into wood, (proper installation requires all supplied screws be used). The installer should provide hardware for other installation applications. Use flat head fasteners only. When properly installed this product has been tested to meet or exceed loads mandated by the Americans with Disabilities Act and ASTM F446, (minimum 250lbs / 113kg). **(However, it is the responsibility of the architect, builder and installer to ensure that the mounting area is secure and that proper mounting hardware is used.)**

Installation:

1. Position grab bar as required and mark hole pattern.
2. Remove grab bar and pre-drill hole pattern for #10 screws.
3. Where applicable, install o-ring onto grab bar flange.
4. Where applicable, install decorative ring onto end of flange.
5. Position grab bar, o-ring and decorative ring into place by aligning pre-drilled holes and flange hole pattern.
6. Attach to mounting surface using all #10 screws provided.
7. Slide escutcheon around bend and press into place over flange o-ring. Wetting o-ring aids with installation.

To learn more about JACLO's warranty, please visit [**jaclo.com**](http://jaclo.com)