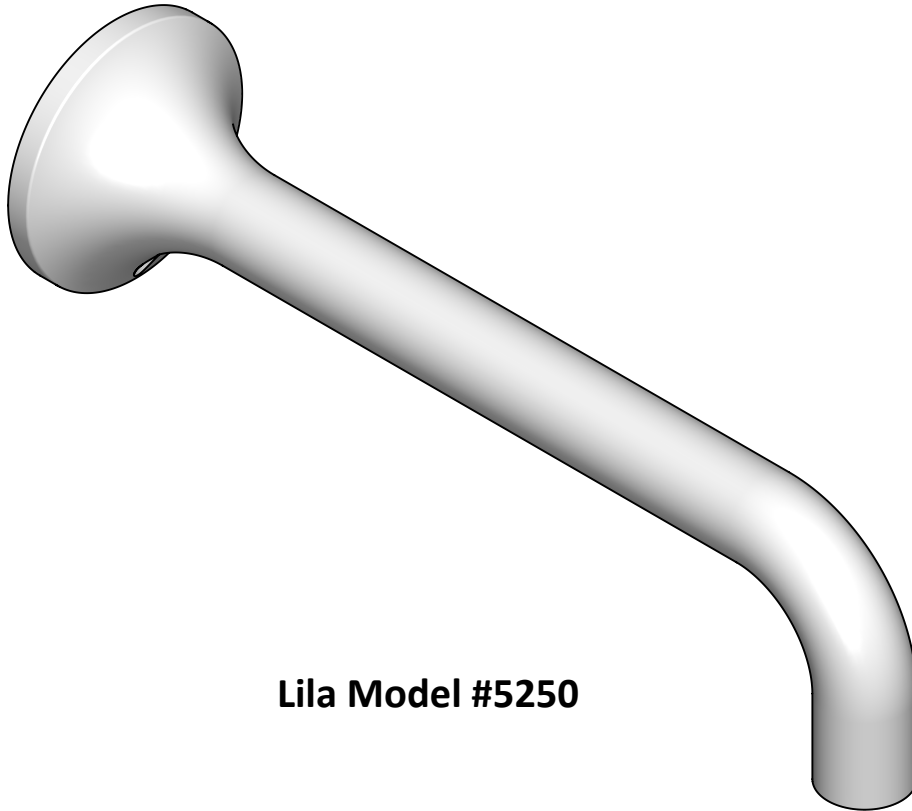


INSTALLATION INSTRUCTIONS

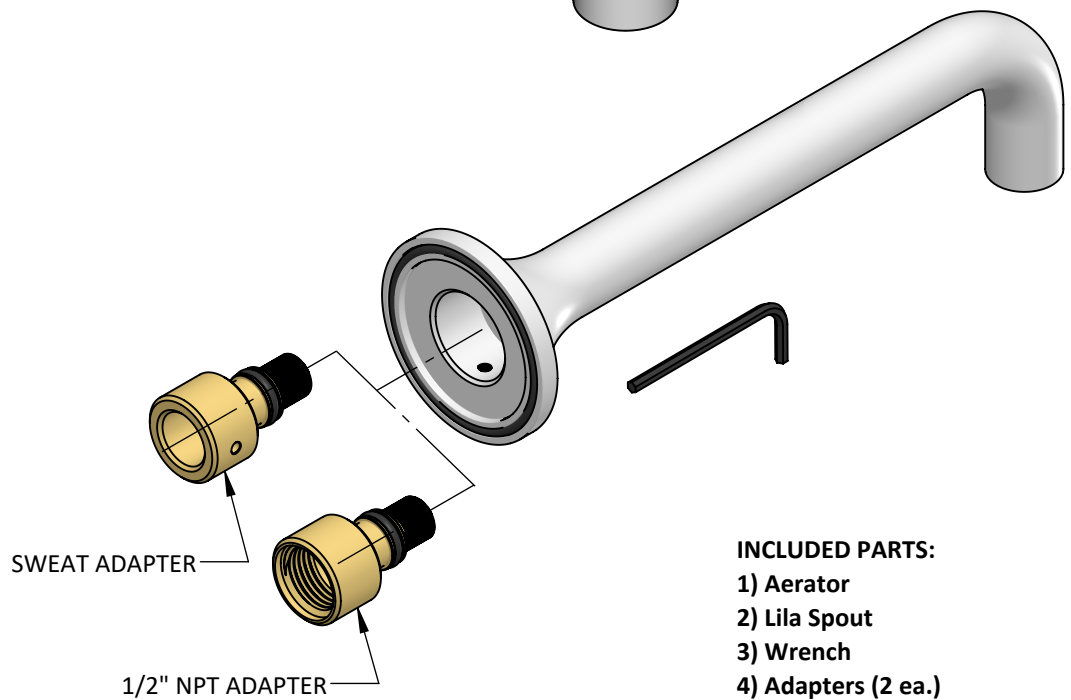
Lila Tub Spout

Part #5250

JACLO®
Confidence from start to finish.™



Lila Model #5250



INCLUDED PARTS:

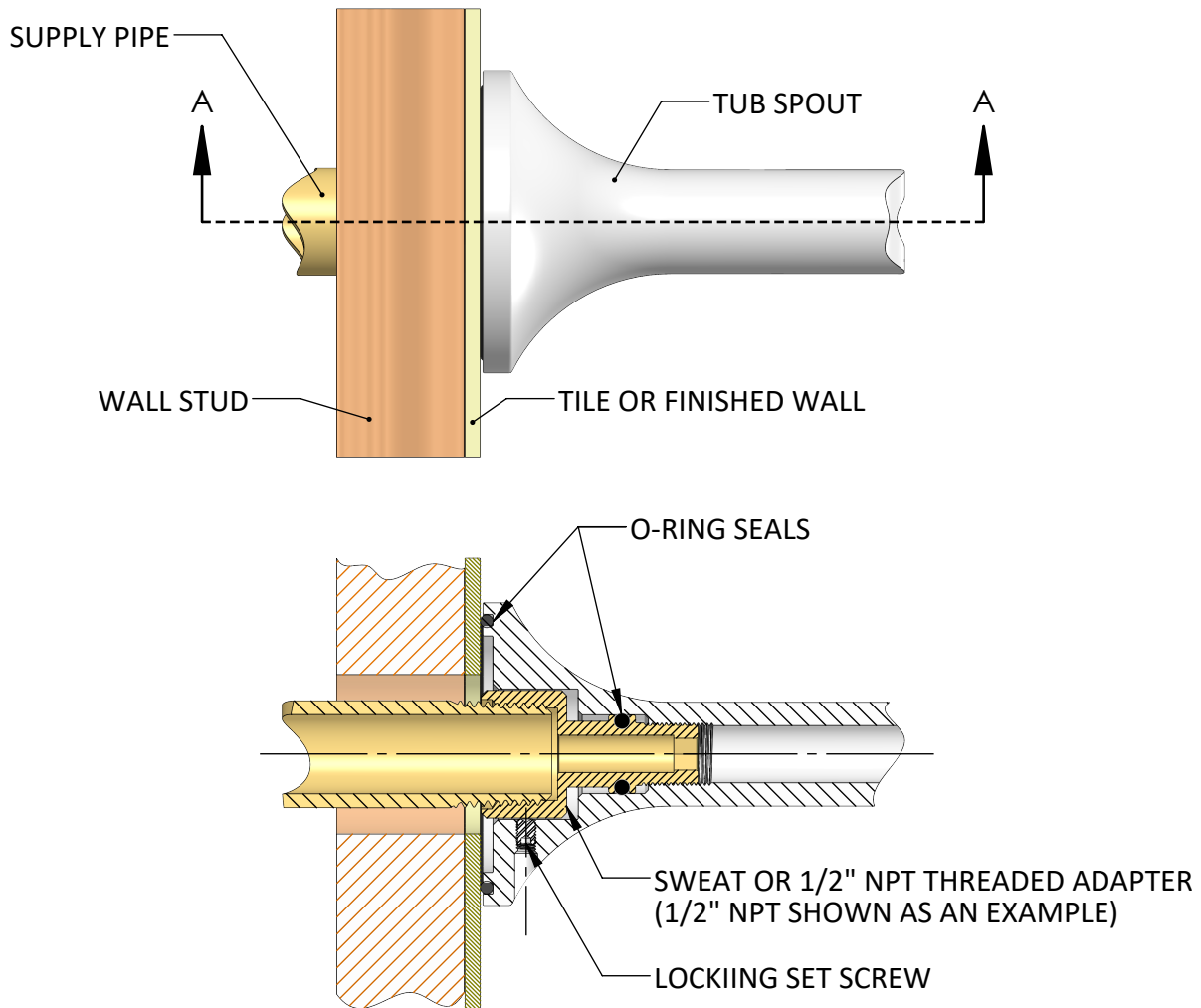
- 1) Aerator
- 2) Lila Spout
- 3) Wrench
- 4) Adapters (2 ea.)

INSTALLATION INSTRUCTIONS

Lila Tub Spout

Part #5250

JACLO
Confidence from start to finish.™



CROSS SECTION OF A TYPICAL INSTALLATION

Installation Instructions:

- Step 1:** Secure the **Adapter** to wall pipe (sweat or 1/2" NPT Adapter). If using the **1/2" NPT Adapter**, apply plumbers putty or tape to seal the connection.
- Step 2:** Thread the **Lila Tub Spout** onto the **Adapter** until flush, and snug against the finished wall surface. Verify the spout outlet is positioned correctly, facing downward.
- Step 3:** Tighten the **Locking Set Screw** to set the proper **Spout** position.
- Step 4:** Remove the **Aerator** and flush to eliminate any debris accumulated during installation. After flushing the **Tub Spout**, carefully re-install the **Aerator**.