

INSTALLATION INSTRUCTIONS

Cubix®II Wall Mounted Accessories

Part #'s: 5401-RH, 5401-SD, 5401-TH 5401-TR, 5401-LTP, 5401-STP, 5401-TB-18, 5401-TB-24, 5401-GS, 5401-GSW



5401-RH



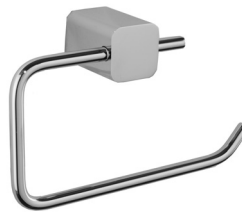
5401-SD



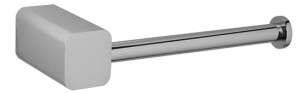
5401-TH



5401-TR



5401-LTP



5401-STP



5401-TB-18



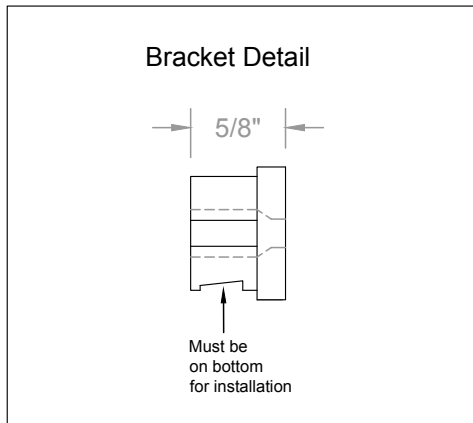
5401-TB-24



5401-GS

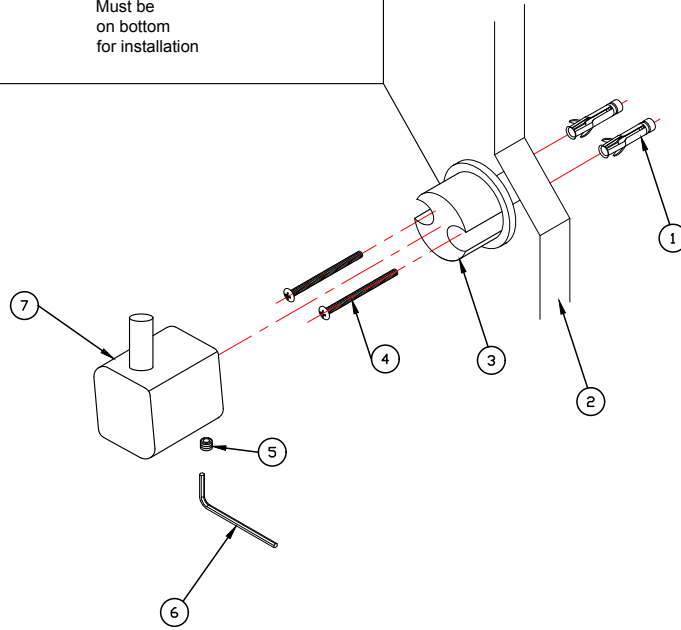


5401-GSW



COMPONENT PARTS		QTY.
1	Plastic Wall Anchors	2
2	Wall	
3	Mounting Bracket	1
4	Screws	2
5	Set Screws	1
6	Hex Wrench	1
7	CUBIX® II Accessory	1

Quantity listed is for Single Hole Accessories



Single Hole Accesories Installation (5401-RH, 5401-SD, 5401-TH, 5401-TR, 5401-LTP, 5401-STP)

1. Determine desired location of accessory.
2. Remove mounting bracket from accessory using allen wrench. Place set screw in secure location.
3. Draw level mark through both holes on mounting plate.
4. Drill 1/4" hole and insert plastic anchors in wall.
5. Insert screw through mounting base and HAND tighten, ensuring flat surface is level and on bottom.
6. Place accessory over mounting base and secure with set screw.

Double Hole Accessories Installation (5401-TB-18, 5401-TB-24, 5401-GS, 5401-GSW)

1. Determine desired location of accessory.
2. Using level and pencil, draw level line length of towel bar/glass shelf.
3. Measure center to center of holes in mounting bracket while mounting brackets are in place. And mark location on wall.
4. Drill 1/4" hole and insert plastic anchors in wall.
5. Remove mounting brackets from accessory using 3/32" allen wrench. Place set screws in secure location.
6. Insert screws through mounting brackets and HAND tighten, ensuring flat surfaces are level and on bottom.
7. Place accessory over mounting bases and secure with set screws.

To learn more about JACLO's warranty, please visit [**jaclo.com**](http://jaclo.com)