

INSTALLATION INSTRUCTIONS

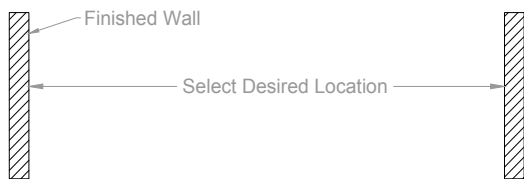
Shower Curtain Rod Flanges

Part #: 6980, 6981, 6982, 6203, 6603, 6703

JACLO®

Confidence from start to finish.™

FIG. 1



*Cut Curtain Rod 1/2" less than distance between walls

FIG. 2

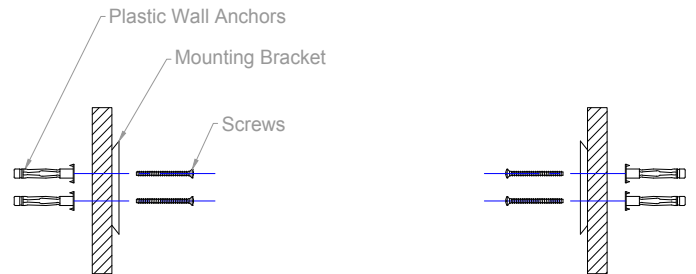


FIG. 3

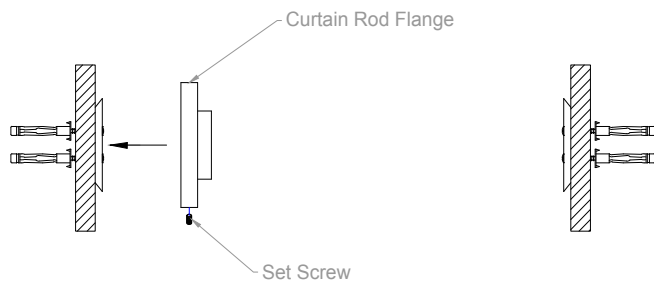


FIG. 4

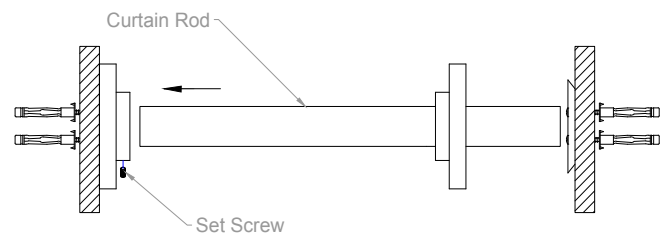


FIG. 5

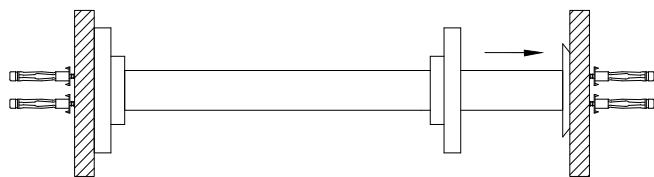
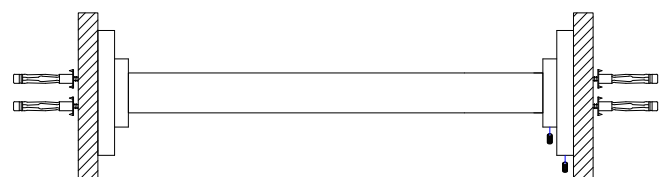


FIG. 6



To learn more about JACLO's warranty, please visit [**jaclo.com**](http://jaclo.com)