

INSTALLATION INSTRUCTIONS

Extension for 3/4" Thermostatic Valve
Part #'s: J-TH34-CART, J-TH12-CART

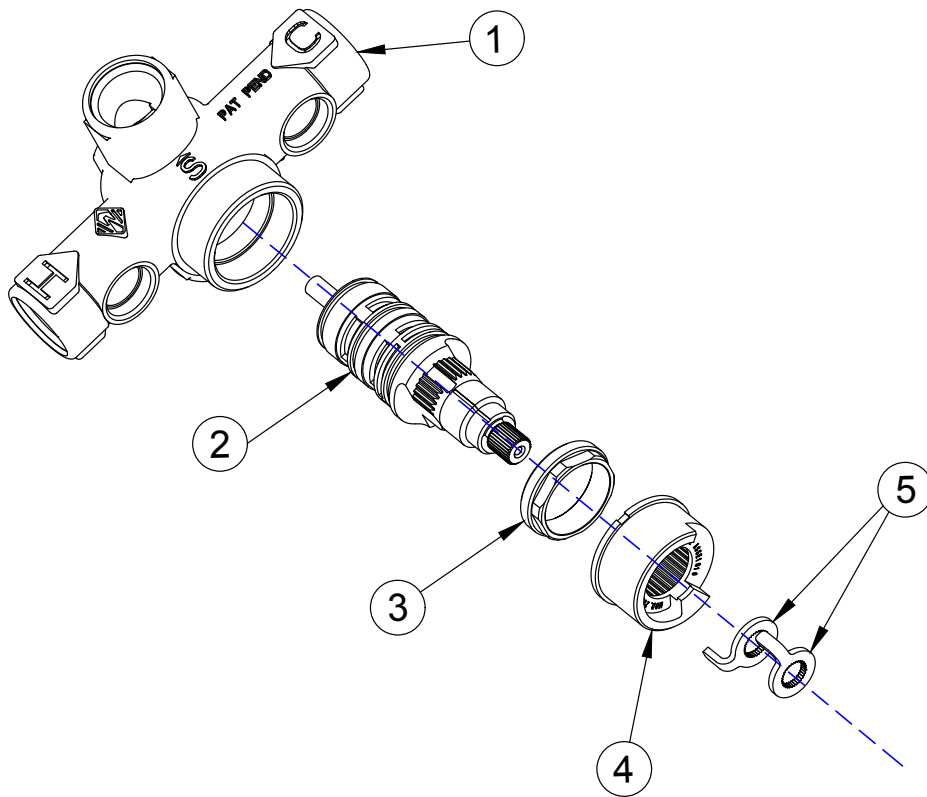


RECOMMENDED TOOLS

1 1/4" (DEEP) SOCKET

PREPARATION

HAVE INSTALLATION INSTRUCTIONS FOR ROUGH AND TRIM ON HAND FOR THIS BEFORE BEGINNING. MAKE SURE WATER IS TURNED OFF, AND RUN ANOTHER FUNCTION ON THAT LINE TO RELIEVE PRESSURE IN LINE. REMOVE HANDLES AND TRIM PLATE (IF INSTALLED)



[J-TH34/J-TH12]

ITEM	DESCRIPTION	QTY	PART #
1	3/4" Thermostatic Body Rough	1	TH34-BODY-RGH / TH12-BODY-RGH
2	3/4" or 1/2" Thermostatic Cartridge	1	J-TH34- CART or J-TH12-CART
3	Thermostatic Cartridge Locknut	1	1050-3-RGH
4	Thermostatic Valve Limit Stop Ring	1	2050-4-0
5	Stainless Steel Limit Stop	2	1050-5-0

REMOVAL

1. Remove handle and trim.
2. Shut off water supply check stops located on thermostatic valve. (*Reference rough in instructions*)
3. Remove Phillips head screw and rough in shield. **DO NOT DISCARD SCREW OR SHIELD**
4. Note position of the limit stops (5). This is the factory setting of maximum temperature. Next, remove limit stops. Retain for reassembly.
5. Remove limit stop ring (4). Retain for reassembly.
6. Remove thermostatic cartridge locknut (3) using 1 1/4" wrench. Retain for reassembly.
7. Remove thermostatic cartridge (2). Pull outward and twist slightly to aid removal. Retain for reassembly.
8. Check for any debris in valve.

INSTALLATION

1. Inspect and remove any debris in thermostatic body, including check stop cavities.
2. Apply lubricant suitable for potable water to the o-rings on the thermostatic cartridge, and insert into valve body rotating back and forth slightly. Orient cartridge with the notch up in the 12 o'clock position for J-TH34 and J-TH12 and 6 o'clock position for J-THVC12.
3. Re-install thermostatic cartridge locknut using a 1-1/4" wrench and tighten nut.

THERMOSTATIC VALVE SET UP (*Reference rough in instructions*)

1. Remove rough in shield and discard if trim is to be installed after valve setup.
2. Turn volume control/diverter to off position.
3. Open hot and cold check stops (should be horizontal, arrow pointing to center of valve).
4. Open volume control/diverter to allow water to flow.
5. Reattach limit stops to original setting
6. Rotate thermostatic valve full counter clockwise and check water temperature with thermometer. Factory setting should be 100° maximum.
7. Limit stop setup:
 - **FOLLOWING STEPS SHOULD BE PERFORMED WITHOUT HANDLE ATTACHED, BY ROTATING VALVE BY HAND ONLY****
 - **DO NOT ROTATE THERMOSTATIC CARTRIDGE PAST THE RESISTANCE POINT. THIS WILL DAMAGE THE CARTRIDGE!****
 - a. Remove limit stops.
 - b. Open volume control/diverter to allow water to flow, run water for 2-5 minutes.
 - c. Rotate thermostatic valve counter clockwise until resistance is felt. Replace hot limit stop so leg is resting against left side of stop ring stop.
 - d. Rotate thermostatic valve clockwise until resistance is felt. Replace cold limit stop so leg is resting against right side of ring stop.
 - e. Turn off water flow.

DIAL POINTER, TRIM, AND HANDLE INSTALLATION (*Reference trim instructions*)

1. Push the dial pointer on to sleeve with pointer on top at 12 o'clock position.
2. Turn on diverter valve to allow water to flow. Measure water temperature and adjust to 100°F.
3. Install dial assembly on to spindle aligning the 100° to the dial pointer.
4. Place adhesive backed foam strip to back side of trim plate.
5. Slide trim plate over sleeve against finished wall.
6. Install handle to desired position using center screw or set screw, trims may vary.
7. REPLACE TRIM.

To learn more about JACLO's warranty, please visit [**jaclo.com**](http://jaclo.com)