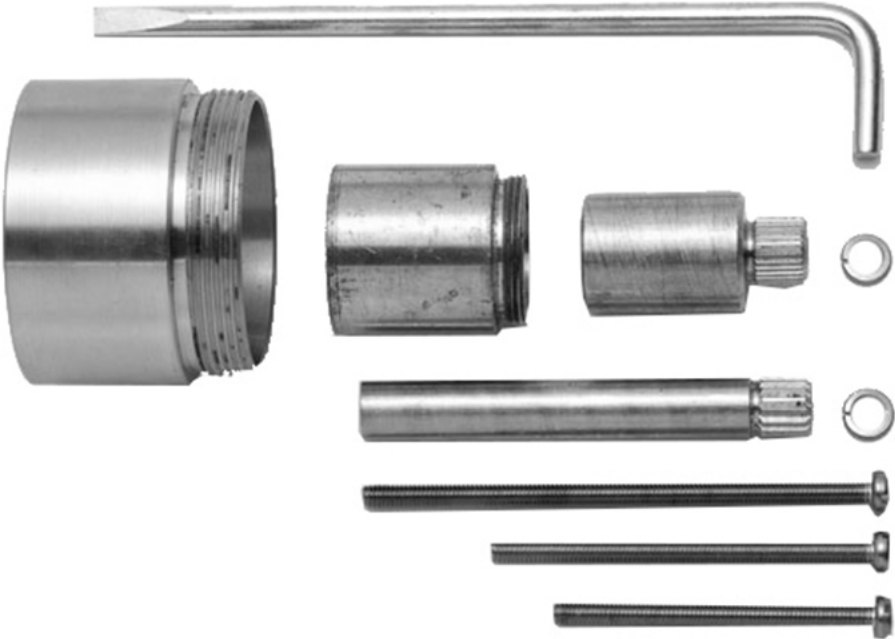
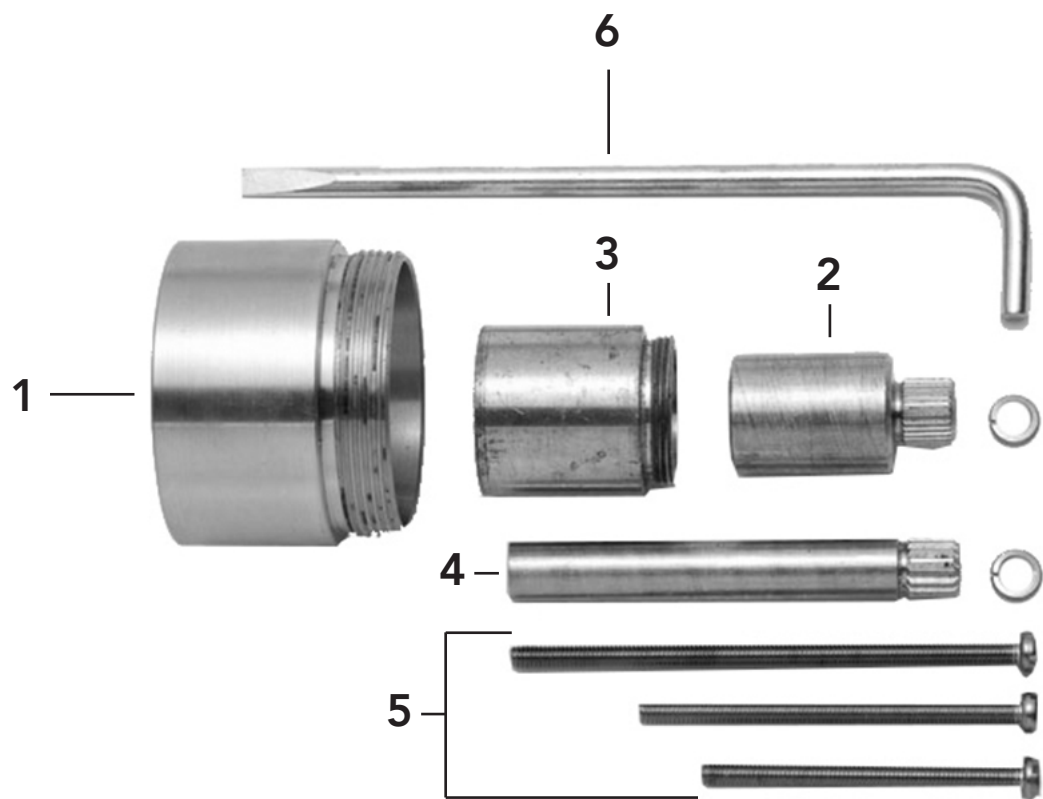


INSTALLATION INSTRUCTIONS

Extension for Cycling Valve
Part #: J-THVC12-EXT



PARTS



#	DESCRIPTION
1	THERM VALVE COLLAR EXTENSION
2	THERM SPLINE EXTENSION
3	VOLUME CONTROL COLLAR EXTENSION
4	VOLUME STEM BROACH EXTENSION
5	REPLACEMENT MACHINE SCREWS, WASHERS, LOCK WASHERS
6	TOOL FOR VOLUME SPLINE SCREW EXTRACTION

PREPARATION

HAVE INSTALLATION INSTRUCTIONS FOR ROUGH AND TRIM ON HAND FOR THIS BEFORE BEGINNING. MAKE SURE WATER IS TURNED OFF, AND RUN ANOTHER FUNCTION ON THAT LINE TO RELIEVE PRESSURE IN LINE. REMOVE HANDLES AND TRIM PLATE (IF INSTALLED)

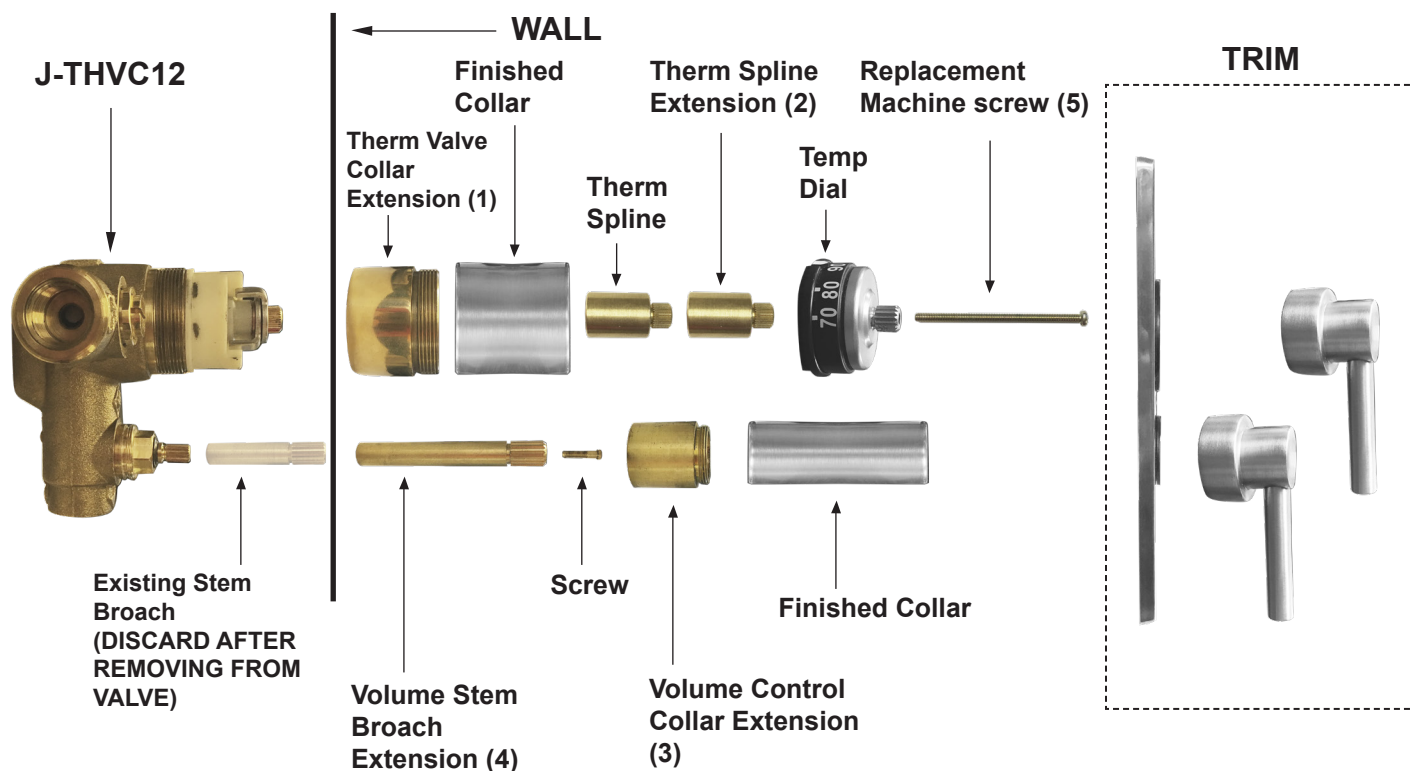
INSTALLATION

THERMOSTATIC VALVE:

1. Remove temperature dial and pointer. (Put screw back into spline to keep assembled)
2. Remove finished collar from trim.
3. Put unfinished **Collar Extension (1)** on rough, thread finished collar onto extension. (May be necessary to re-align the black dial pointer to the 12 o'clock position)
4. Add **Therm Spline Extension (2)** (stacking) on. Temporarily put screw back through to limit stops in same location.
5. Replace spline adapter from trim.

VOLUME CONTROL:

6. Remove sleeve, (if installed).
7. Using **Tool (6)**, remove screw from spline. Remove spline.
8. Install **Spline Extension (5)** by reusing screw.
9. Put unfinished **Volume Control Collar (3)** extension on body.
10. Add finished volume control sleeve (stacking) on.



To learn more about JACLO's warranty, please visit **jaclo.com**