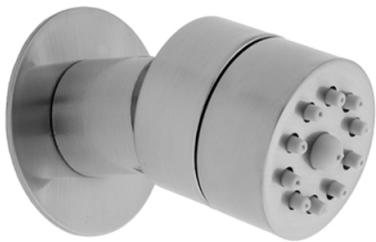


INSTALLATION INSTRUCTIONS

Body Sprays

Part #'s: S020, S025, S070, S022, S028, S072

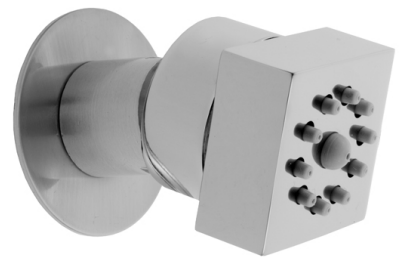
JACLO[®]
Confidence from start to finish.™



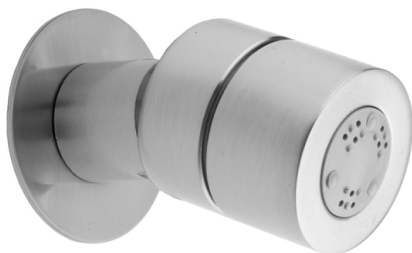
S020



S025



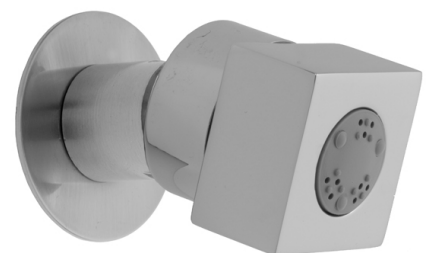
S070



S022



S028



S072

INSTALLATION

1. Remove washer (if included) from back of body spray
2. Nipple should protrude 3/8" from finish wall
3. Slide/screw escutcheon onto nipple
4. Apply plumbers tape to nipple
5. Screw body spray onto nipple
6. Run water, check for leaks

Note - optional sliding escutcheons are available. Escutcheons slide over nipple, not base of body spray

To learn more about JACLO's warranty, please visit [**jaclo.com**](http://jaclo.com)