

INSTALLATION INSTRUCTIONS

T121-TRIM, METROPOLIS VOLUME CONTROL / DIVERTER TRIM

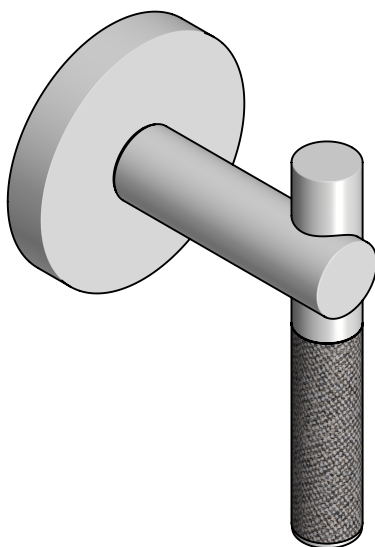
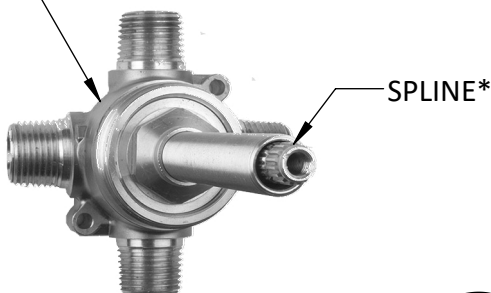
Part # T121-TRIM

JACLO
Confidence from start to finish.™

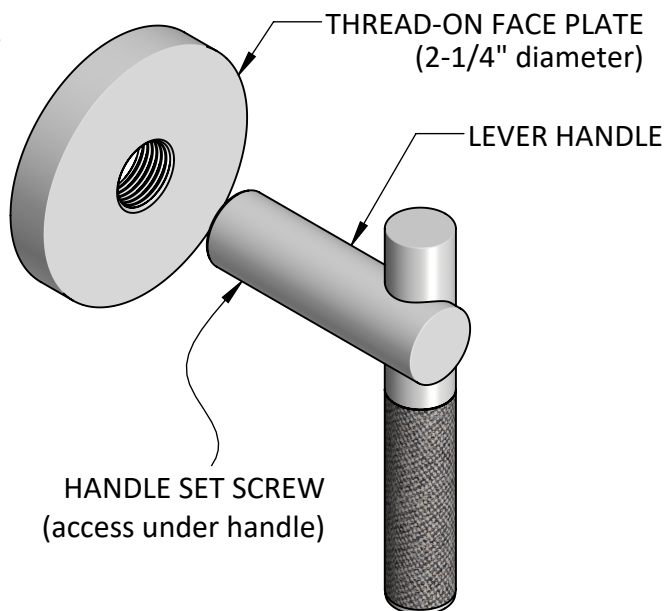
Materials provided:

1ea. Parts Shown Below
1 pkg. Installation Hardware

DIVERTER VALVE EXAMPLE
(not included)



**T121-TRIM
AS INSTALLED**



**T121-TRIM
EXPLODED VIEW**

Typical Diverter Trim Mounting Detail:

- Step-1:** Verify the in-wall **Diverter Valve** (see example above) has been installed correctly.
- Step-2:** Thread on the **Face Plate** until flush against the wall.
- Step-3:** Insure the **Diverter Valve** spline* extends at least 1" beyond the front surface of the **Face Plate**.
- Step-4:** Position the **Lever Handle** accordingly, then push it onto the **Diverter Valve** spline, up to the front-facing surface of the **Face Plate** (with a slight clearance).
- Step-5:** Once the **Lever Handle** is positioned correctly, tighten the **Handle Set Screw**.
- Step-6:** Upon completion, test the valve to verify functionality.