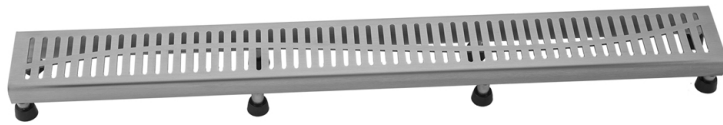


48" Channel Drain Slotted Grate

Model #: 6210-48-

FEATURES:

- 304 stainless steel construction
- Nominal Size: 48"
- Key included to remove grate for easy cleaning
- Adjustable feet for perfect installation
- JACLO channel drain body sold separately
- Standard finishes: BSS & PSS. Additional finishes available: MBK, WH, & JACLO=COLOR. Call for pricing and availability

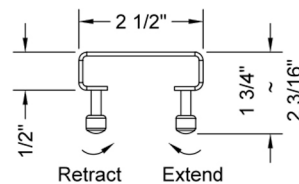
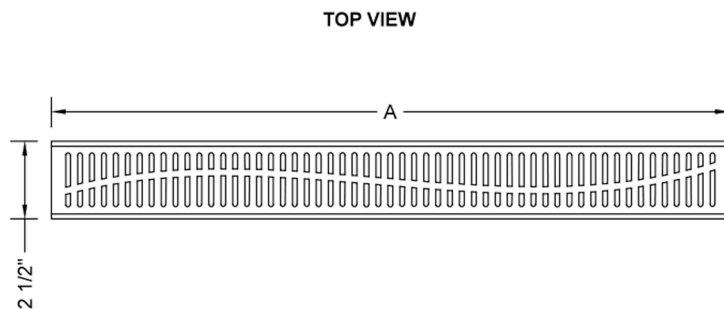


AVAILABLE FINISHES:

Polished Stainless (PSS) Brushed Stainless (BSS)

SPECIFICATION DRAWING:

| JACLO SLOTTED GRATE ONLY | | |
|--------------------------|---------------|---------|
| PART. # | DESCRIPTION | A |
| 6210-24-XXX | SLOTTED GRATE | 22 1/4" |
| 6210-32-XXX | SLOTTED GRATE | 30 1/8" |
| 6210-36-XXX | SLOTTED GRATE | 34 1/8" |
| 6210-42-XXX | SLOTTED GRATE | 42 |
| 6210-48-XXX | SLOTTED GRATE | 46" |
| 6210-60-XXX | SLOTTED GRATE | 57 3/4" |



COMPLIANCES:

Complies with: ASME A112.18.2-2015/CSA B125.2-15