

48" Channel Drain Tile In Grate

Model #: 6226-48-

FEATURES:

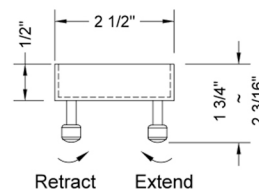
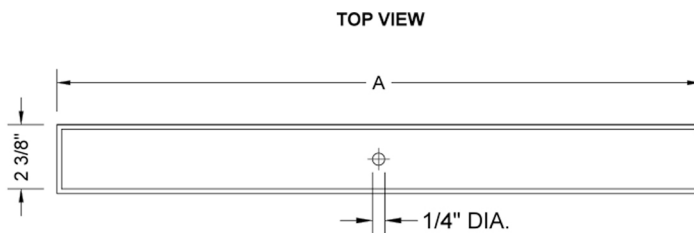
- 304 stainless steel construction
- Nominal Size: 48"
- Key included to remove grate for easy cleaning
- Empty tray -- insert your own tiles
- Adjustable feet for perfect installation
- JACLO channel drain body sold separately
- Available in BSS ONLY, as body is not visible



AVAILABLE FINISHES:

Brushed Stainless (BSS)

SPECIFICATION DRAWING:



JACLO TILE GRATE ONLY		
PART. #	DESCRIPTION	A
6226-24-XXX	TILE GRATE	22 1/4"
6226-32-XXX	TILE GRATE	30 1/8"
6226-36-XXX	TILE GRATE	34 1/8"
6226-42-XXX	TILE GRATE	42"
6226-48-XXX	TILE GRATE	46"
6226-60-XX	TILE GRATE	57 3/4"

COMPLIANCES:

Complies with: ASME A112.18.2-2015/CSA B125.2-15