

Flexible Smooth Copper 3/8" O.D. x 36" Long Faucet Supply Tube

Model #: 664-

FEATURES:

- Use with 3/8" O.D. supply valves

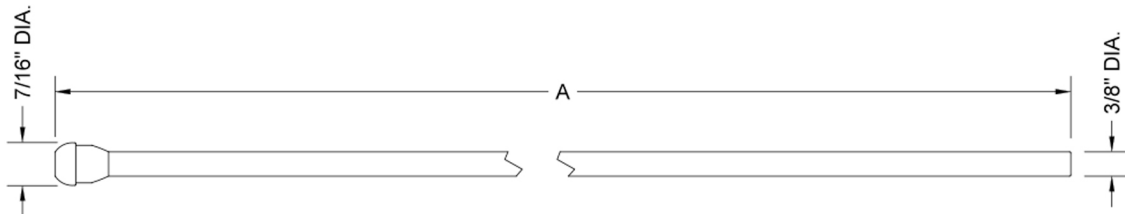


AVAILABLE FINISHES:

Polished Chrome (PCH)	Satin Chrome (SC)	Bronze Umber (BU)
Satin Nickel (SN)	Pewter (PEW)	Caramel Bronze (CB)
Polished Nickel (PN)	Antique Brass (AB)	Antique Copper (ACU)
Oil-Rubbed Bronze (ORB)	Polished Brass (PB)	Polished Copper (PCU)
Vintage Bronze (VB)	Satin Brass (SB)	Matte Black (MBK)
White (WH)	Satin Cooper (SCU)	Almond (ALD)
Amber (AMB)	Azure Blue (AZB)	Coral (COR)
Mint Green (GRN)	Stone Grey (GRY)	Lilac (LAC)
Light Blue (LBL)	Limon (LIM)	Plum (PLM)
Pink (PNK)	Red (RED)	Graphite (GPH)
Aged Unlacquered Brass (AUB)		

SPECIFICATION DRAWING:

JACLO FAUCET SUPPLY TUBE		
PART. #	DESCRIPTION	A
661-	3/8" OD x 12" FAUCET SUPPLY TUBE	12"
662-	3/8" OD x 20" FAUCET SUPPLY TUBE	20"
663-	3/8" OD x 30" FAUCET SUPPLY TUBE	30"
664-	3/8" OD x 36" FAUCET SUPPLY TUBE	36"



COMPLIANCES:

Complies with: ASME A112.18.1-2012/CSA B125.1-12