

Rough-in Kit for Freestanding Tub Fillers

Model #: 9990-FST-BOX-RGH



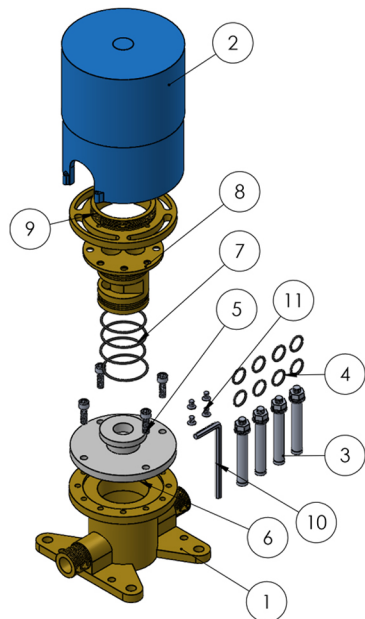
FEATURES:

- For concrete slab or concealed rough-in installation for 9990-FST-, 9990-LHHFST-, 9992-FST-, and 9992-LHHFST-
- Includes: Rough-in box, Leveling plate, Mounting hardware, & Inlet pipes

AVAILABLE FINISHES:

N/A

SPECIFICATION DRAWING:



ITEM NO.	PART NUMBER	QTY.
1	Brass Concealed Box Body	1
2	Concealed Rough-in Box	1
3	Expansion Screws	4
4	Small O-ring	8
5	Screw	4
6	White Plastic Plug	1
7	Large O-ring	4
8	Concealed Box Connector	1
9	Floor Tube Connector	1
10	4MM Hex Wrench	1
11	Small Screw	4