

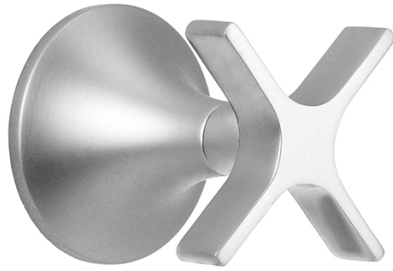
Lila Cross with Escutcheon Trim for Exacto Volume Controls and Diverters (J-VC34 / J-VC12 / J-20682 / J-20686 / J-20688 / J-20687 / J-20689)



Model #: T160-TRIM-

FEATURES:

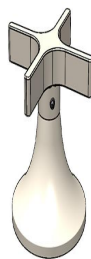
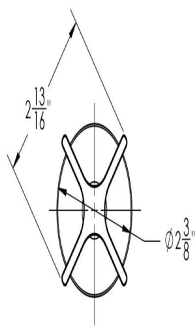
- All brass construction
- When used with Valve J-20686, J-20687, J-20688 or J-20689: Turning the handle turns the water on and off, controls the volume of the water, and diverts the water
- When used with Valve J-20682: Turning the handle controls the volume of the water and diverts the water
- When used with Valve J-VC12 or J-VC34: Turning the handle controls the volume of the water
- Requires rough valves J-VC34, J-VC12, J-20682, J-20686, J-20688, J-20687, or J-20689



AVAILABLE FINISHES:

Polished Chrome (PCH)	Satin Chrome (SC)	Bronze Umber (BU)
Satin Nickel (SN)	Pewter (PEW)	Caramel Bronze (CB)
Polished Nickel (PN)	Antique Brass (AB)	Antique Copper (ACU)
Oil-Rubbed Bronze (ORB)	Polished Brass (PB)	Polished Copper (PCU)
Vintage Bronze (VB)	Satin Brass (SB)	Matte Black (MBK)
Satin Gold (SG)	Polished Gold (PG)	Black Nickel (BKN)
White (WH)	Unlacquered Brass (ULB)	Satin Cooper (SCU)
Almond (ALD)	Amber (AMB)	Azure Blue (AZB)
Coral (COR)	Mint Green (GRN)	Stone Grey (GRY)
Lilac (LAC)	Light Blue (LBL)	Limon (LIM)
Plum (PLM)	Pink (PNK)	Red (RED)
Graphite (GPH)	Aged Unlacquered Brass (AUB)	

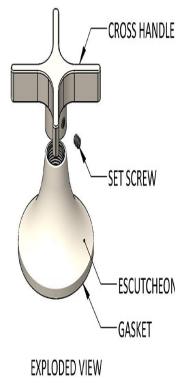
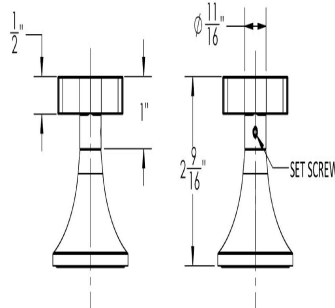
SPECIFICATION DRAWING:



AS INSTALLED



SPRAY PATTERNS:



EXPLODED VIEW